



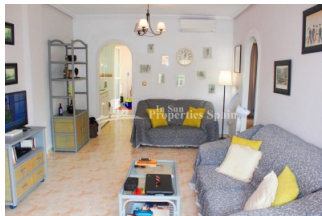
REF: # 8922

ORIHUELA COSTA (VILLAMARTIN GOLF)



INFO

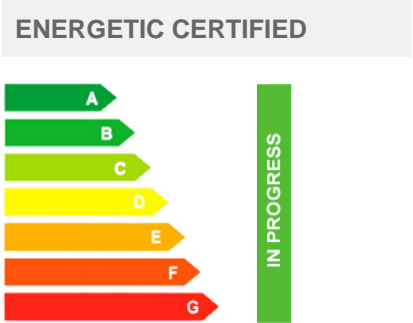
PRIS:	77.999 €
BOLIG TYPE:	Leilighet
STED:	Orihuela Costa (Villamartin Golf)
SOVEROM:	2
Bad:	1
BOAREAL (m2):	73
TOMT (m2):	-
Terrasse (m2):	26
ÅR:	-
ETASJER:	-
MELDING	-



BESKRIVELSE

Close to Villamartin Plaza and Golf Course you will find this Ground Floor Apartment in Urb. PINADA GOLF. This 72m2 Apartment boasts 12m2 front terrace and 14m2 private patio. Internally the property offers a nice living space with lounge/dining area, separate kitchen and utility room. There are 2 good size bedrooms with fitted wardrobes and a bathroom. There is access to the communal pool and the potential for off street parking. Villamartin offers a wide range of services. For over 40 years it has been a golf tourist attraction and as it is expected from a residential complex of this standard all services are fully developed. The area is also known to have one of the healthiest climates in the world. Villamartin is also very close to renowned high standard international school El Limonar and the famous outdoor La Zenia Boulevard shopping and restaurant centre, the largest of its kind in southern Spain- shopping heaven!! There are many commercial centers including the well know Villamartin Plaza and La Fuente Centre along with many restaurants,

fashion shops, supermarkets, banks, pharmacies etc. Villamartin was built round one of the most prestigious golf courses on the Costa Blanca- Villamartin Golf Club- it is home to a Cosmopolitan and International community. Just a short distance away you can find 3 other golf courses such as Las Ramblas, Campoamor and La Finca. 3km from some of the best beaches in the region, open weekly markets, cinemas etc. Villamartin is approximately 50 minutes from Alicante Airport and 45 minutes from Murcia airport. By Train there are connections Madrid- Alicante (2:30 h) AVE Madrid-Murcia & Barcelona-Alicante (4.5 h)



STIL	UTSIKT	AIRCONDITION	DISTANSE TIL :
<ul style="list-style-type: none"> Mediterranean 	<ul style="list-style-type: none"> Panorama 	<ul style="list-style-type: none"> Stue Soverom 	Strand : 4 Km Flyplass: 40 Km Sentrum : 2 Km
ORIENTERING	MØBLER	SKATT	FLOORING
South east	<ul style="list-style-type: none"> Furnished 	Community : 270 € I.B.I : 200 €	<ul style="list-style-type: none"> Fliser
KJØKKEN	HAGE TERASSER	EXTRA	ENERGETIC CERTIFIED
<ul style="list-style-type: none"> Lukket kjøkken Hvitevarer Granit benkeplate 	<ul style="list-style-type: none"> Ooverbygd terrasse Stein murer Felles hage 	<ul style="list-style-type: none"> Innebygde garderober Sikkerhets dør Vinduer med dobbelt glass Sattelit TV 	

"OUR EXPERIENCE IS YOUR GUARANTEE"